



WAVERS INDIA TAPS MOUNTING PVT. LTD.
B-42/7 & B-42/7A, 2nd Floor, Jhilmil Industrial Area,
Shahdara, New Delhi-110095 (INDIA)
E: info@prpindia.com | W: www.prpindia.com
  /prpbathfittings

FAUCET WORLD

an ultimate experience



**DISCOVER
WHAT GOES
BEHIND A GREAT
PRODUCT LINE**

EXPERIENCE WATER LIKE NEVER BEFORE

World class faucets

For your most important spaces

Kitchen and Bathroom is the most important space in any home, And faucets are the hearts of any kitchen and bathroom.

Choose the right ones the very first time as this is not something you change frequently.

Faucets are used over and over again on daily basis and are bound to leak. We are proud to give you zero leakage, zero breakage products.

Its important to choose a product by looking into details of what goes into making the product; the raw material.

What we use is brass with highest purity.



WATER

Its soft, its flexible, yet so powerful that nothing can resist it easily.

WORKING WITH OBJECTIVES



PRP
BATH FITTINGS

THE MANAGEMENT STRONG AND STABLE



HISTORY

It all started in the year 2007 when the idea of PRP Bath fittings started taking shape. We started with trading wherein we procured material from manufacturers and sold them in the market. That was a starting point but it gave us an experience that quality standards can only be maintained once the entire production comes under our control. We took a step ahead and started procuring raw material at our end and started getting manufacturing done on a job work basis with our in house assembly and quality control. This had its own challenges as the production was not under our control. We took a major leap in the year 2017 when we set up our own manufacturing plant in New Delhi and everything came under our control. At present we have all in house processes starting from procurement of raw material to the final product. This has taken our products to a stupendous level of quality and durability. Today, we are one of the leaders in Bathroom Fittings with own manufacturing set up and a range of quality products.

FROM A HUMBLE BEGINNING
TO A SOUGHT AFTER BRAND





CORE VALUES & PURPOSE

We at PRP Bath Fittings believe in creating aesthetic, unique, and commercially competitive bath fittings to make your bathroom the most comfortable corner of your house. We passionately strive to provide the ultimate experience to our customers.



All our products are manufactured from 99% pure raw materials, which have the lowest lead contents, within the permissible limits, so that there are no health risks attached to the use of our products. To constantly enhance the quality of our products, we make sure all our products go through rigorous testing and multi-step quality checks.

We adhere to water conservation policy and are socially committed to making zero-leakage and zero-breakage products. Our streamlined manufacturing processes and continual investment in technology makes sure that we keep introducing new and innovative products.



Culture

Our entire team is bound by the shared beliefs and values of our founder, reinforced everyday in behaviours and understandings.



Collaboration

To us collaboration is inclusion of various beliefs and ideas into one. It encourages streamlined processes and provides a workplace where everyone does their best.



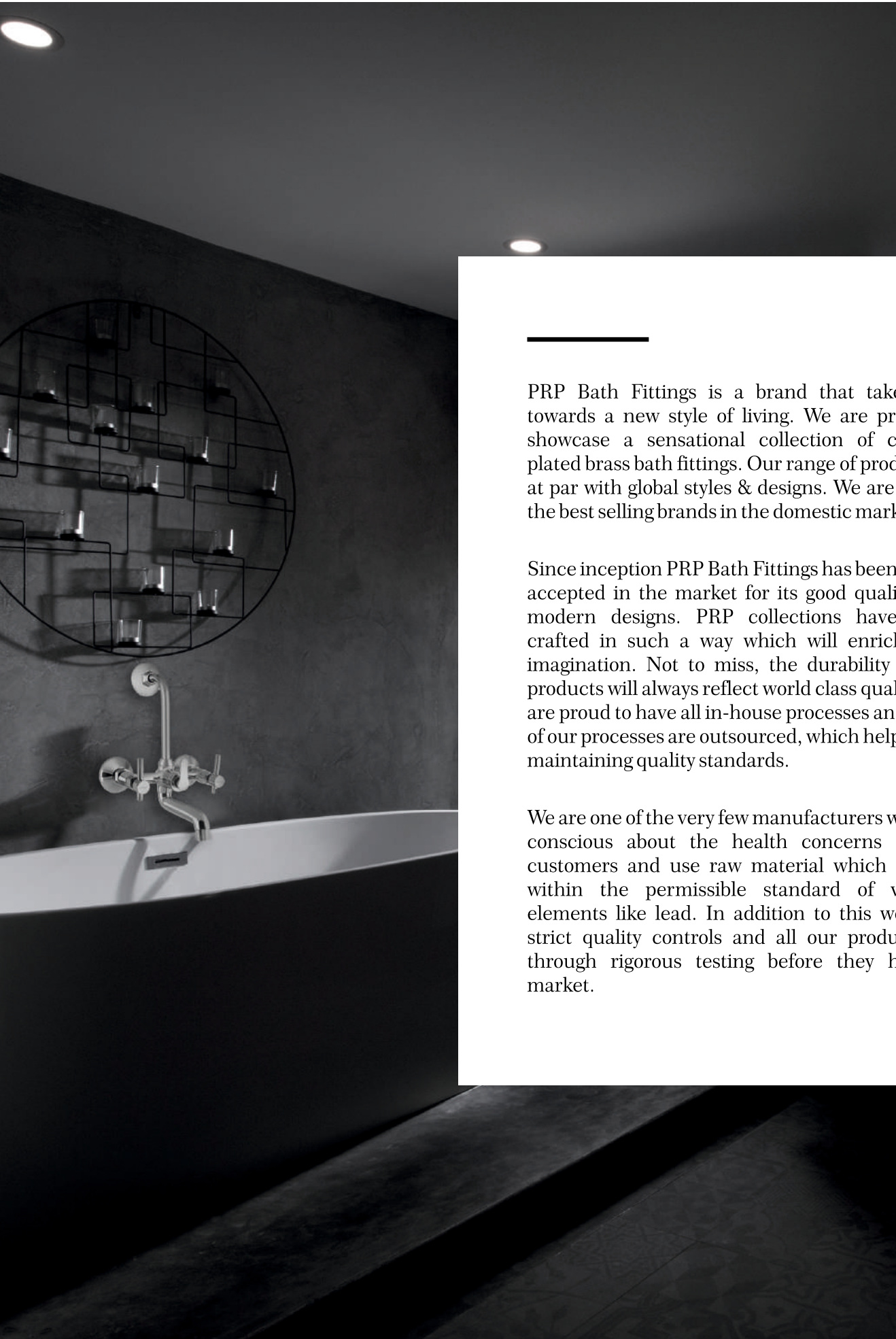
Innovation

New ideas and challenges is a way of life at PRP. Innovation lives in the heart of our engineers. We are always open to new ideas that lead towards innovation.



Growth

We focus on making great products and offering the highest level of customer service. This has resulted in a consistent growth. Clearly defined business goals is steering us steadily.



PRP Bath Fittings is a brand that takes you towards a new style of living. We are proud to showcase a sensational collection of chrome plated brass bath fittings. Our range of products is at par with global styles & designs. We are one of the best selling brands in the domestic market.

Since inception PRP Bath Fittings has been highly accepted in the market for its good quality and modern designs. PRP collections have been crafted in such a way which will enrich your imagination. Not to miss, the durability of the products will always reflect world class quality. We are proud to have all in-house processes and none of our processes are outsourced, which helps us in maintaining quality standards.

We are one of the very few manufacturers who are conscious about the health concerns of the customers and use raw material which is well within the permissible standard of various elements like lead. In addition to this we have strict quality controls and all our products go through rigorous testing before they hit the market.

FREEDOM
OF CHOICE



Be Valued

**By Quality
By Product Engineering**

PRP FOCUSES ON DESIGN, DEVELOPMENT AND OPERATION OF INTEGRATED SYSTEMS OF PRODUCTION TO OBTAIN HIGH QUALITY AND ECONOMICALLY COMPETITIVE PRODUCTS

INTEGRATED PROCESSES



INDUCTION FURNACE

CONTROLLED TEMPERATURE CONTINUOUS INDUCTION

We have a high quality temperature controlled induction furnace, it has a coil carrying alternating electric current which, surrounds the container or chamber of metal. Currents are induced in the metal (charge), the circulation of these currents producing extremely high temperatures for melting the metals and for making alloys of exact composition.

It helps in giving exceptional casting, which is the very first and most important step towards a great final product.

-
- Increased efficiency
 - Reduced Cost of Operation
 - Improved Metallurgical Function
 - Reduced Oxidation Losses
 - Cleaner Operations



**SOCIALLY
COMMITTED**
**to make Zero
Leakage Products**





AESTHETICS in very product

Our products create an artistic impact on the appearance of your bathrooms. Aesthetics that complement functional usability.

Appearance reflects quality and it shows in every product that we manufacture.

ACCOLADES ALL AROUND

We had opportunities, we took them and built upon them. Our strategy has been focused on being a company that offers products across a range of different end applications and choices. All accolades are a result of unbeatable quality.

LOVED IT

EXCELLENT

RECOMMENDED!

**REALLY
COOL**

TOPNOTCH

TOGETHER
WE GROW



Unity is strength and teamwork is what works best for us. Coming together often is an opportunity to collaborate and achieve wonderful things. These events are meaningfully designed to unwind as well as create an ever lasting bond.

TOGETHER
WE PROSPER



SURAT EVENT



NEPAL EVENT



NEPAL EVENT



SURAT EVENT

SPREADING OUR WINGS

A wide network of associates, who are the pillars of our growth. be it in the country or overseas we leave a mark with our quality and range.

BIHAR
GUJARAT
ODISHA
MADHYA PRADESH
PUNJAB
ASSAM
WEST BENGAL
MAHARASHTRA
DELHI
RAJASTHAN
NEPAL

How a long hot shower after a tough day withers away all the worries.

A beautiful bathroom is like a happy place and the heart and soul of which are faucets and showers.

Bathroom

Products so amazing they make you dance in the shower. High quality products resulting out of exceptional engineering.

Faucets



PRP FAUCETS
APPRECIATED AND ADMIRERD
BY THE WORLD
FOR A FLAWLESS FLOW

Vocal For Local ATMANIRBHAR BHARAT AWARD



Awarded and Appreciated

PRP has always been a leading brand in the bathroom fittings segment. Appreciated by the customers all across. This award re affirms the faith our associates and customers have in us.





CUSTOMER REVIEWS

You'll Never Find Any Complaint

I am connected with the firm for more than 10 years now and the quality that the company manufactures is unbeatable in their segment.

Mr. Niran
Udar Trade Concern from Kathumandu,
Nepal

In Kolkata Market, best selling products are of low quality and low prices but PRP's pocket friendly products helped it cover the good segment of our market.

Mr. Bajrangi
Shri Sanitary form Kolkata,
India

Excellent Support from the company whether it is dealing directly with customers for their grievances or giving timely deliveries.

Mr. Bunt
B.K Enterprises from West Bengal,
India

We were connected with the firm since it was in Chawri Bazaar, the continuous connection is solely due to the quality products and company support.

Mr. Krishan Gupta
Aggarwal Sanitation from Kolkata,
India

Being new in this line started first with PRP products: Quality, Reliability and Customer Service helped my business to boost, and this was all possible because I was connected with PRP.

Mr. Manoj
Utkal Building Materials Pvt. Ltd. from
Odisha, India

Quality and Support, these are the two parameters due to which we had business for long years.

Mr. Kutubuddin
S.K Sanitation from Bihar,
India

- and many more

THE FUTURE LOOKS BRIGHT

A team of highly skilled professionals, is what drives the Brand PRP. The finest of calibres are behind the making of every single product. From Engineers to R&D professionals our team is buzzing with talent. Every single employee is aligned to the vision of the company of being nothing less than the best.



Pradeep Jain
Managing Director

Pradeep comes from a very humble background, who started with trading and made sure that the Brand PRP grows in a sustainable and exciting way. He is technically sound and always makes sure that the clients buy into the vision of where their brand could go, coming up with creative ideas and inspiring the team to achieve bigger and better things. He has a very hands on approach in terms of running the company and delivering an impeccable service.



Prakhar Jain
Director

Prakhar is a young second generation entrepreneur who joined the business a few years back. Before this he had a stint with Deloitte, but he felt that his ideas could be better put to use as an entrepreneur. Hence he joined his father's business and decided to grow it further. He firmly believes that his father is his biggest source of inspiration and his pillar of support. He has a creative approach and is keenly involved in incorporating new age technology in the business. Strategy and Execution are his focus areas.

WE ARE WHAT OUR TEAM IS

Close Knit Team

Core Team



Komal Tyagi
(HOD-Casting)

Komal Tyagi is an industry stalwart and brings with him an experience of 30 years in the bathroom fittings industry. He understands the functioning of the casting department like no one else. Casting being a key process for bringing out perfect products in bathroom fittings, he plays a key role in making sure that the department runs perfectly without any breakdowns. He works closely with his colleagues, which results in smooth functioning of day-to-day operations of the casting department.



Deep Chand Sharma
(HOD-Plating)

Deep Chand carries an experience of 35 years behind him and handles the responsibility of maintaining quality standards in the plating department. He took the role of the Head of Plating Department right from the setting up of our manufacturing unit and hasn't looked back since then. He works alongside the management and is a part of all key decisions. He understands modern technology and is a team player, loved by all his subordinates.



Nand Gopal
(HOD-Machining)

Nand Gopal started his career in the bathroom fittings industry about 25 years back and carries with him a vast experience of working with the best-known brands. During his association with Wavers, he's responsible for ensuring that the product starts taking the real shape in the plating department. He always shares interesting insights and conversations with his team and makes sure that his juniors keep themselves abreast with the technical advancements. He has played a pivotal role in the growth of the company.



Chander Pal Singh
(HOD-Testing)

Chander Pal has many operational responsibilities at Wavers, his key responsibility is to oversee the Testing department. Working in line with the high quality standards of the company, he makes sure that every single product goes through a rigorous testing process. He gels with the company culture well and makes this a great place to work for his team. He has been instrumental in helping PRP scale to manage its rapid growth. He has led multiple operations leading to implementation of new technology.



Pawan Kumar
(Head of Finance)

Pawan has over ten years of experience working with high-tech companies and a proven track record of successfully helping organizations manage their finance department. He has hands-on experience of more than 10 years in a number of finance verticals and in several functional areas - from operations to purchase to finance. His rich background of experience has helped us to manage finances efficiently. From functions like internal audit to project reports, he knows the nuances of the finance department and plays a key role in managing the working capital and the fund flow.



Preeti Garg
(HOD-Customer Service)

Preeti is known for her Customer Service and has been associated with PRP from the past 4 years. She anticipates the needs of the customer and always motivates her team to go that extra mile to provide a resolution. She is a problem solving pro and believes in providing preemptive solutions that the customers don't even realize is an option. When it comes to customer service she is a cool head and a steady guiding hand.



Baljeet Singh
(Advisor-Marketing)

Baljeet is a unique combination of deep strategic insight with a thorough understanding of market dynamics. He brings a broad spectrum of knowledge and experience to client relationships. He has been a strong force in driving the marketing activities of PRP.

Advisors

**GREAT PRODUCTS
BACKED BY AN
AMAZING
CUSTOMER SERVICE**



**GREAT CUSTOMER SERVICE
IS OUR PERSONALITY.
THE REASON WHY OUR
CUSTOMERS LOVE US.**



WE DO ALL OF THIS BECAUSE...

**WE CREATE A CUSTOMER
WE SATISFY THE CUSTOMER
WE RETAIN THE CUSTOMER**

Creating a customer is easy but what we focus upon is retaining a customer. Retention comes from satisfaction and satisfaction comes from flawless quality and exceptional customer service.





PROFESSIONAL
APPROACH



CRITICAL
THINKING



ETHICS
AND
EQUALITY



PRODUCTIVE
MINDSET



COLLABORATIVE
GROWTH



APPLYING
TECHNOLOGIES



PROBLEM
SOLVING



INNOVATIVE
AND
ENTERPRISING

TipTap™

**A revolutionary cleaner from Wavers
India Taps Mounting Pvt. Ltd.**

Your taps have more germs than your toilet handle. TipTap cleaner cleans out all the germs, bacterias, dusts, etc. After intense research, Wavers India Taps Mounting developed this special product, TipTap cleaner, the best cleaner for your taps and faucets. It cleans your fittings and retains the shine.

Let your bath fixtures look as new as the day you first purchased it!

No harmful chemicals used.

Totally safe to use. Natural fragrances used (Rose, Sandal, and Lavender) Lab tested before release.



FAUCET & BATH FITTINGS CLEANERS



SPIC AND SPAN



STEP
BY
STEP
INTEGRATION

“

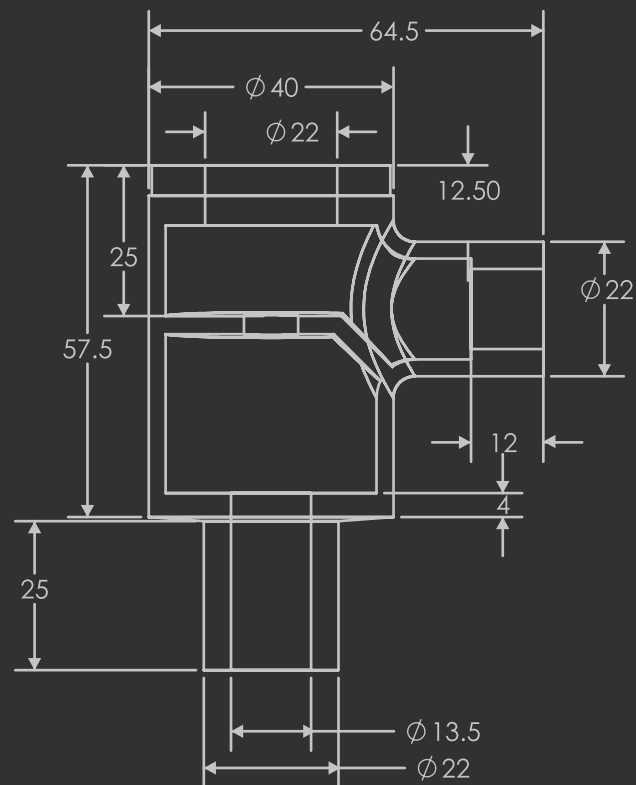
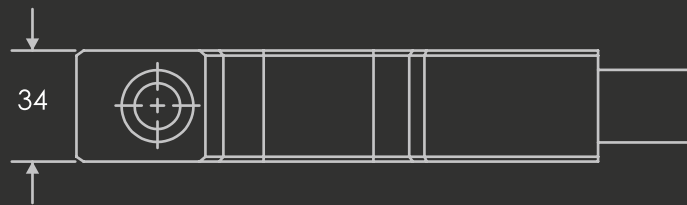
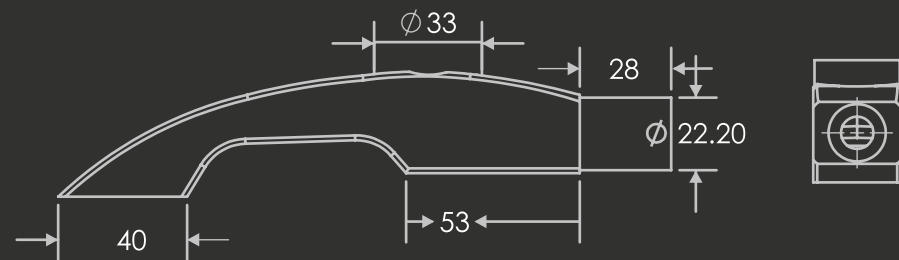
The perfect products
for the perfect price

**STREAMLINED
PROCESSES**

STEP BY STEP INTEGRATION

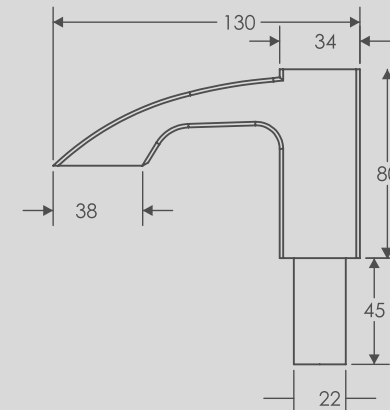
- Manufacturing Space of more than 13000 sq feet spread on 4 floors
- All in house processes from casting to final packaging
- Full time skilled manpower
- In-house designing and development

STEP
BY
STEP
INTEGRATION



CONCEPTUALISATION • INITIAL SKETCHING
DIGITAL CONVERSION OF SKETCHES • 3D RENDERING
ON CLIMATRON SOFTWARE • MOULD DEVELOPMENT
SAMPLING • FINAL PRODUCTION

1 PRODUCT DESIGNING



STEP
BY
STEP
INTEGRATION

“

The perfect products
for the perfect price

PURE
INGOTS

RAW MATERIAL IS THE KEY OF OUR HIGH QUALITY
PRODUCTS. WE USE INGOTS WITH 90% PURITY,
CONSISTING OF 60% COPPER AND 38% ZINC.

2 RAW MATERIAL



□ STEP
BY
STEP
INTEGRATION

“

The perfect products
for the perfect price

INDUCTION
FURNACE

WE HAVE A CONTINUOUS TEMPERATURE CONTROLLED
INDUCTION FURNACE, WHICH GIVES CONTINUITY &
EVENNESS IN PRODUCT FINISHING. IT ALSO RESULTS IN
HIGH STRENGTH OF PRODUCTS.

3 CASTING



STEP
BY
STEP
INTEGRATION

“
The perfect products
for the perfect price

SIGNIFICANT
STYLING

OUR HIGH QUALITY MACHINES & SKILLED
MANPOWER SETS A HIGH STANDARD OF
MACHINING RESULTING IN PERFECT PRODUCTS.

4 MACHINING



STEP
BY
STEP
INTEGRATION



The perfect products
for the perfect price

**EXTREME
SHINES**

OUR POLISHING LINE EMPLOYS HIGHLY SKILLED
MANPOWER WITH PERFECT SUPERVISION FOR
SPOTLESS POLISHING. THIS REDUCES REJECTIONS
TO THE MINIMUM.

5 POLISHING



STEP
BY
STEP
INTEGRATION

“

The perfect products
for the perfect price

ADDED
ARMOUR

PLATING BEING A KEY PROCESS NEEDS EXTRA CARE AND ADDS ON TO THE LIFE OF THE PRODUCTS. OUR STANDARD PARAMETERS ARE NICKEL PLATING OF 13-17 MICRONS AND CHROME PLATING OF 0.3-0.7 MICRONS.

6 PLATING



STEP
BY
STEP
INTEGRATION

“

The perfect products
for the perfect price

NOTHING
UN-NOTICED

DURING THE PROCESS OF TESTING WE TORTURE OUR PRODUCTS BEFORE THEY MOVE OUT. OUR RIGOROUS TESTING INCLUDES AIR TESTING, CHROMIUM THICKNESS TESTING, WATER PRESSURE TESTING, SALT SPRAY TESTING TO ENSURE ERROR FREE PRODUCTS.

7 TESTING



STEP
BY
STEP
INTEGRATION

“

The perfect products
for the perfect price

CREATING
OBSESSIONS

ALL OUR PRODUCTS ARE SHIPPED IN PERFECT &
SECURE PACKAGING SO THAT CUSTOMER FINDS THE
PRODUCTS IN PERFECT SHAPE & FINISH ON RECEIPT.

8 PACKAGING



PRODUCT RANGE



MORE THAN

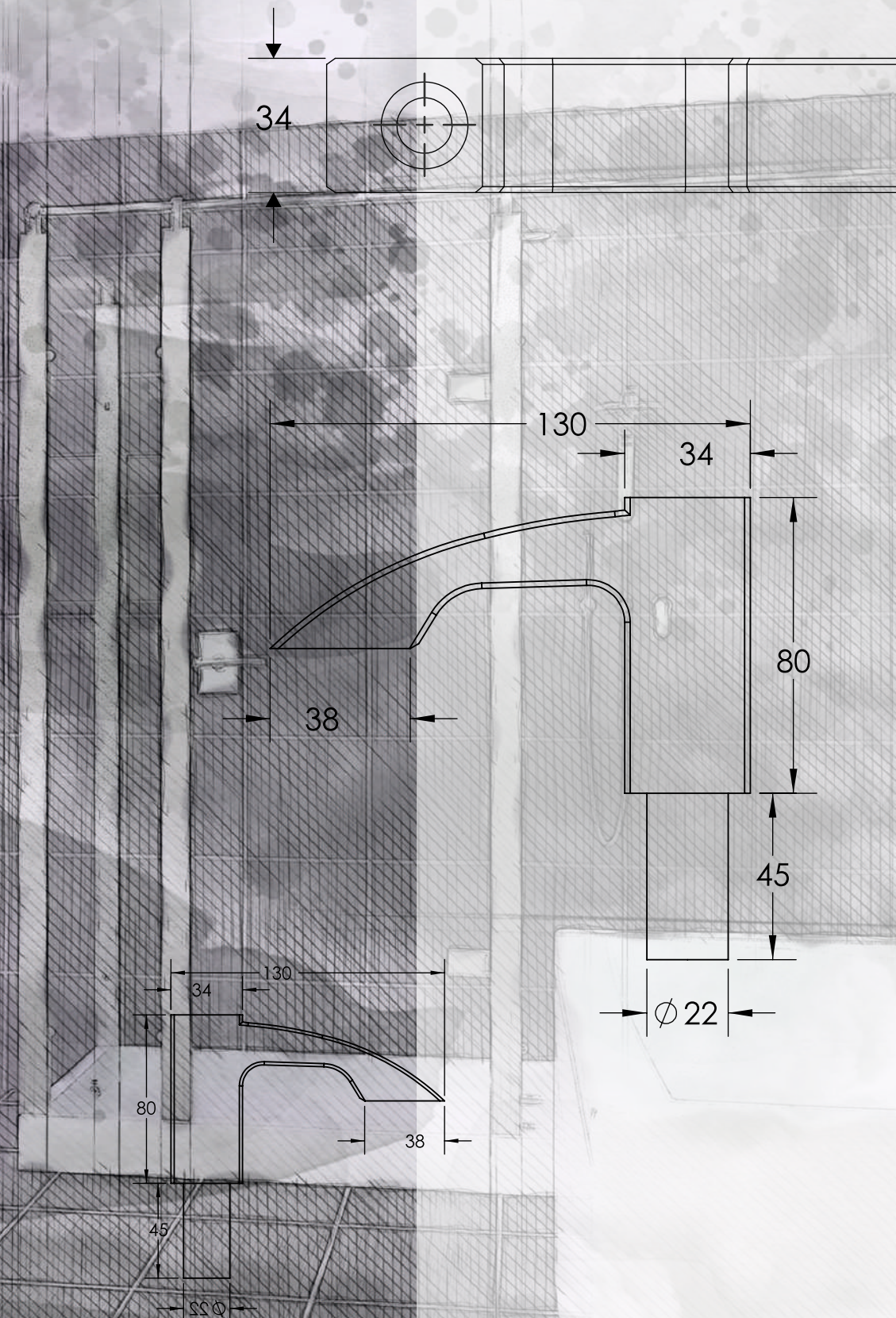
20


**COLLECTIONS &
250 PRODUCTS**

SINK MIXERS | WALL MIXERS | BIB COCKS | LONG BODY
PILLAR COCKS | STOP COCKS | ANGLE COCKS | ACCESSORIES

UNIQUE DESIGN METHODOLOGY

What goes behind manufacturing our products is our unique design methodology. A broad study of principles of water flow and the use of right material is what makes our products live upto 'zero leakage, zero breakage' standards. Right from the beginning with the choice of high quality and pure raw material upto final finishing every step involves quality checks. High quality machines and other equipments are installed in every department to provide immaculate quality. Perfection is what we aim for from the stage of 'prototype' upto the 'final product'.





As a responsible company we adapt technologies that reduce the carbon footprints in every process of our product development.

WE CARE

FOR YOU & FOR THE
ENVIRONMENT

High Quality Ingots with 60% Copper contents & 38% Zinc.

Safe limits of lead contents not exceeding 1.5% as compared to about 5% lead contents in locally made products.

CLOUD COLLECTION



THE DESIRABLES

MINI CONTINENTAL COLLECTION



HIGH-CLASS FULLY BRASS-MADE COLLECTION FOR ELEGANT BATHROOMS

Upgrade your bathroom fixtures that suit your style. PRP's Mini Continental Collection is a collection that will give your bathroom a royal look.

EXPERIENCE WATER



M-101 CP BIB COCK



M-112 CP SWAN NECK



M-118 CP 2-IN-1 WALL MIXER
WITH OUT BEND

DELUXE COLLECTION



LUXURY DESIGNED TO LAST A LIFETIME

Deluxe Collection is one of the most comfortable and premium bath collections. This can make your bathroom stylish and relaxed. Its bath fittings and accessories are designed to provide extra comfort.

EXPERIENCE WATER



DX-104 CP LONG BODY



DX-117 CP SINK MIXER



DX-118 CP 2-IN-1 WALL MIXER
WITHOUT BEND

METRO COLLECTION



PEAK PERFORMANCE LEVELS

This collection is designed for all your deluxe needs at reasonable pricing. Made from high-quality brass, PRP's Metro fixtures are all you need for an elegant & fancy bathroom.

EXPERIENCE WATER



METRO-104 CP LONG BODY



METRO-117 CP SINK MIXER



METRO-118 CP 2-IN-1 WALL MIXER
WITHOUT BEND

LEO COLLECTION



FASHIONABLE AND ROYAL

Another one of our Cloud Collections, the Leo collection is extremely fashionable and gives your bathroom a modern, innovative, and classy look.

EXPERIENCE WATER



LEO-104 CP LONG BODY



LEO-117 CP SINK MIXER



LEO-118 CP 2-IN-1 WALL MIXER
WITHOUT BEND

EURO COLLECTION



EXPERIENCE WATER



EURO-101 CP BIB COCK



EURO-117 CP SINK MIXER

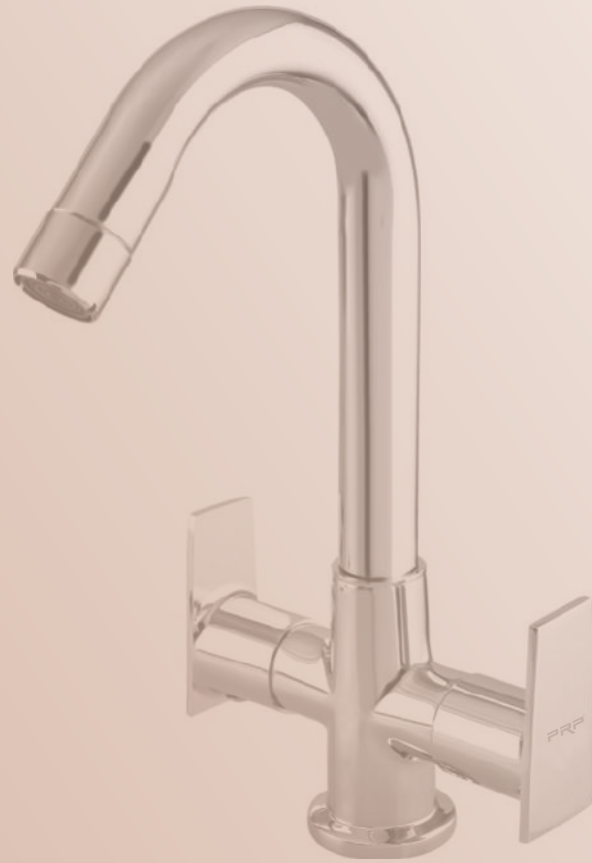


EURO-118 CP 2-IN-1 WALL MIXER
WITHOUT BEND

QUALITY AND RICHNESS

Euro collection, a high-quality, minimalistic, and versatile collection that is suitable for any bathroom. It belongs to our Cloud Collections and resembles superiority and grandeur.

SHELL COLLECTION



EXPERIENCE WATER



SHELL-104 CP LONG BODY



SHELL-117 CP SINK MIXER



SHELL-118 CP 2-IN-1 WALL MIXER
WITHOUT BEND

THE PURE AND ALLURE

The bestest by PRP. Before anything else awesome can happen in your bathroom's design, its fundamental layout has to be killer. So with this collection you can do wonders.

AQUA COLLECTION



EXPERIENCE WATER



AQUA-101 CP BIB COCK



AQUA-117 CP SINK MIXER



AQUA-118 CP 2-IN-1 WALL MIXER
WITHOUT BEND

LUXURY WITH SMOOTH STYLING

The Aqua collection features elegant curves with smooth silhouettes. This stunning collection continues the tradition of setting new standards of luxury.

RICH COLLECTION



NEW SPIRIT EVERYDAY

CRUZE COLLECTION



ADD VALUE TO YOUR BATHROOMS

Designed for the modern savant who values the preservation of art, craft and heritage. Thanks to Cruze Collection who give a new modern look for your bathroom.

EXPERIENCE WATER



CRU-104 CP LONG BODY

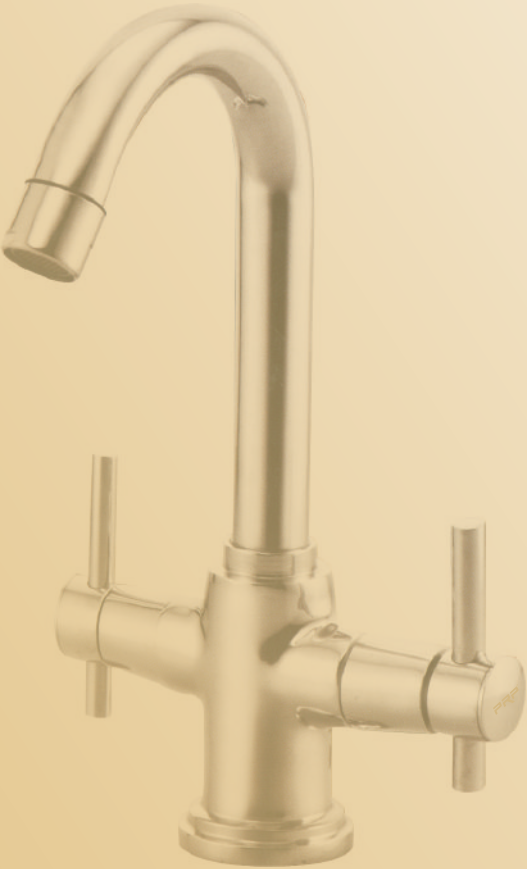


CRU-117 CP SINK MIXER



CRU-118 CP 2-IN-1 WALL MIXER
WITH OUT BEND

SPARKLE COLLECTION



DISCOVER YOUR STYLE

The best bathroom taps are easy to fit, stylish, sophisticated and durable. Best bathroom taps will save you money and ensure you’re buying a tap that truly compliments your bathroom. This sparkle collection makes your bathroom always sparkling royal.

EXPERIENCE WATER



SPR-104 CP LONG BODY



SPR-117 CP SINK MIXER



SPR-118 CP 2-IN-1 WALL MIXER
WITHOUT BEND

ESS ESS COLLECTION



EXPERIENCE WATER



ESS-104 CP LONG BODY



ESS-117 CP SINK MIXER



ESS-118 CP 2-IN-1 WALL MIXER
WITHOUT BEND

FREEDOM OF CHOICE

Today, modern technology and design can turn your master bathroom into a spa-like experience & experience it with Ess Ess Collection.

REGAL COLLECTION



EXPERIENCE WATER



REG-104 CP LONG BODY



REG-116 CP BASIN MIXER



REG-118 CP 2-IN-1 WALL MIXER
WITHOUT BEND

FOR YOUR OWN AMAZING SPACE

Transform your bathroom into a relaxing spa
with our range of luxury bathroom faucets.
Experience Regal Collection by us.

SWISS COLLECTION

LUXURY DESIGNED
TO LAST A LIFETIME



NOTHING BUT THE BEST

Create your personal retreat to enjoy some moments of solitude with our amazing collection of luxury bath experiences by Swiss Collection. Pamper your senses by this collection.

EXPERIENCE WATER



SW-104 CP LONG BODY



SW-111 CP SINK COCK



SW-118 CP WALL MIXER
WITH OUT BEND

SOLO COLLECTION



EXPERIENCE WATER



SOLO-102 CP PILLAR COCK



SOLO-117 CP SINK MIXER



SOLO-118 CP 2-IN-1 WALL MIXER
WITH OUT BEND

GIVE YOUR BATHROOM A NEW AND LUXURIOUS FEELING

The Bathroom is now a Place for rejuvenation and relaxation and a real Pampering Zone. Use these products which give your bathroom a luxury pampering sensation.

SKY COLLECTION



EXPERIENCE WATER



SKY-102 CP PILLAR COCK



SKY-112 CP SWAN NECK



SKY-118 CP 2-IN-1 WALL MIXER
WITH OUT BEND

EVERYTHING THAT YOUR BATHROOM NEEDS

You don't have to wait a minute longer to get the bath of your dreams. Use Sky Collection to fulfill your dream bath desires.

SUPER DELUXE COLLECTION



EXPERIENCE WATER



SDX-102 CP PILLAR COCK



SDX-117 CP SINK MIXER



SDX-119 CP 3 IN 1 WALL MIXER
WITHOUT BEND

PRECIOUS JUST LIKE YOU

Deluxe Bath's bathroom provide the style, materials, & professional touches that will transform your dream bathroom into reality. Use Super Deluxe Collection to give your bathroom a classy feel.

PREMIER COLLECTION



TAP WITH MUSCLE

RADICAL COLLECTION



EXPERIENCE WATER



RAD-122 CP DIVERTOR 4 WAY



RAD-104 CP LONG BODY



RAD-111 CP SINK COCK

LATEST & LUXURIOUS BATH COLLECTION

A marvelous way to enhance your bathroom look & feel. Transform your bathrooms into the ultimate personal retreat by using Radical Collection. Give your bathroom design a boost with a little planning and our inspirational bathroom faucets ideas.

EDGE COLLECTION



FUNCTIONAL AND STYLISH

When choosing a bathroom faucet or Shower Heads you want something that's functional but also stylish. Shop our Edge Collection of bathroom faucets, available in a variety of styles and finishes.

EXPERIENCE WATER



EDGE-128 CP SPOUT)



EDGE-112 CP SWAN NECK



EDGE-118 CP 2-IN-1 WALL MIXER
WITHOUT BEND

FLORENTINE COLLECTION



EXPERIENCE WATER



FLO-102 CP PILLAR COCK



FLO-122 CP DIVERTOR 4 WAY



FLO-118 CP 2-IN-1 WALL MIXER
WITHOUT BEND

MAKE YOUR BATHROOM STYLISH AND COMFORTABLE

Each and every element of your bathroom receives the same level of attention to detail and personal care that makes your bathroom stylish and unique. Experience Florentine Collection & add a splash of contemporary style and modern elegance to your bathroom.

SHOWER COLLECTION



FEEL CLOSE TO RAIN

RAIN SHOWER COLLECTION



WHERE YOUR DAY STARTS AND ENDS

It gives you a relaxing bath at home after having a busy day at work. When you go to buy rain shower heads, then you are required to buy one that will not corrode, one that will give your bathroom a quality look and one that will jolt you in the morning to give you the stamina to go to work. Experience of showering in the rain without necessarily being in the rain.

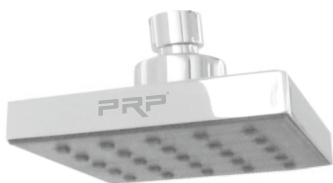
EXPERIENCE WATER



SS RAIN SHOWER 8" X 8" ULTRASLIM
WITH RUBBIT CLEANING SYSTEM



SS RAIN SHOWER 8" X 8" SANDWICH
WITH RUBBIT CLEANING SYSTEM



ABS RAIN SHOWER 8" X 8" RIZ
WITH RUBBIT CLEANING SYSTEM

OVER HEAD COLLECTION



EXPERIENCE WATER



ABS RAIN SHOWER 5" ROUND JAGWAR
WITH RUBBIT CLEANING SYSTEM



SOME BELL



ROCKET

REFRESHING AND REJUVENATING

Shower arms and extensions refer to the same group of apparatuses-straight, curved, or jointed tubes that extend or redirect your shower head. It is important to look for quality when purchasing a shower head extender. There is a risk of deterioration from rust, corrosion, and general wear and tear. Also, as a consumer, you should expect easy installation in shower arm extensions; furthermore, you should expect no loss of shower water pressure. So our Shower Arms are affordable, easy to use & customer convenience designs.

HEALTH FAUCETS COLLECTION



EXPERIENCE WATER



DOLPHIN (BRASS)



CLASSIC (ABS)



DELITE

ENJOY FRESH AND CLEAN COMFORT

As a leading health faucet manufacturer in the industry, we make sure to manufacture and supply the best quality products that can withstand international standards.

- These faucets are an ideal option for bathroom fittings.
- Health faucets are made with the best quality of chrome finishing. Use our health faucets for proper hygiene and safety.

ACCESSORIES COLLECTION



EASY OPENING AND CLOSING



HIGH FLOW DIVERTOR BODY



PROJECT ANGLE COCK



WASTE COUPLING BRASS

YOUR HELP AT HAND

Create a wonderful space with bathroom accessories. It can be an extension of your favorite theme or an area where you try something different in terms of design. Whatever your tastes, we've got plenty of flanges, extension pipe, angle cock & more to make it feel functional & easy for you.